

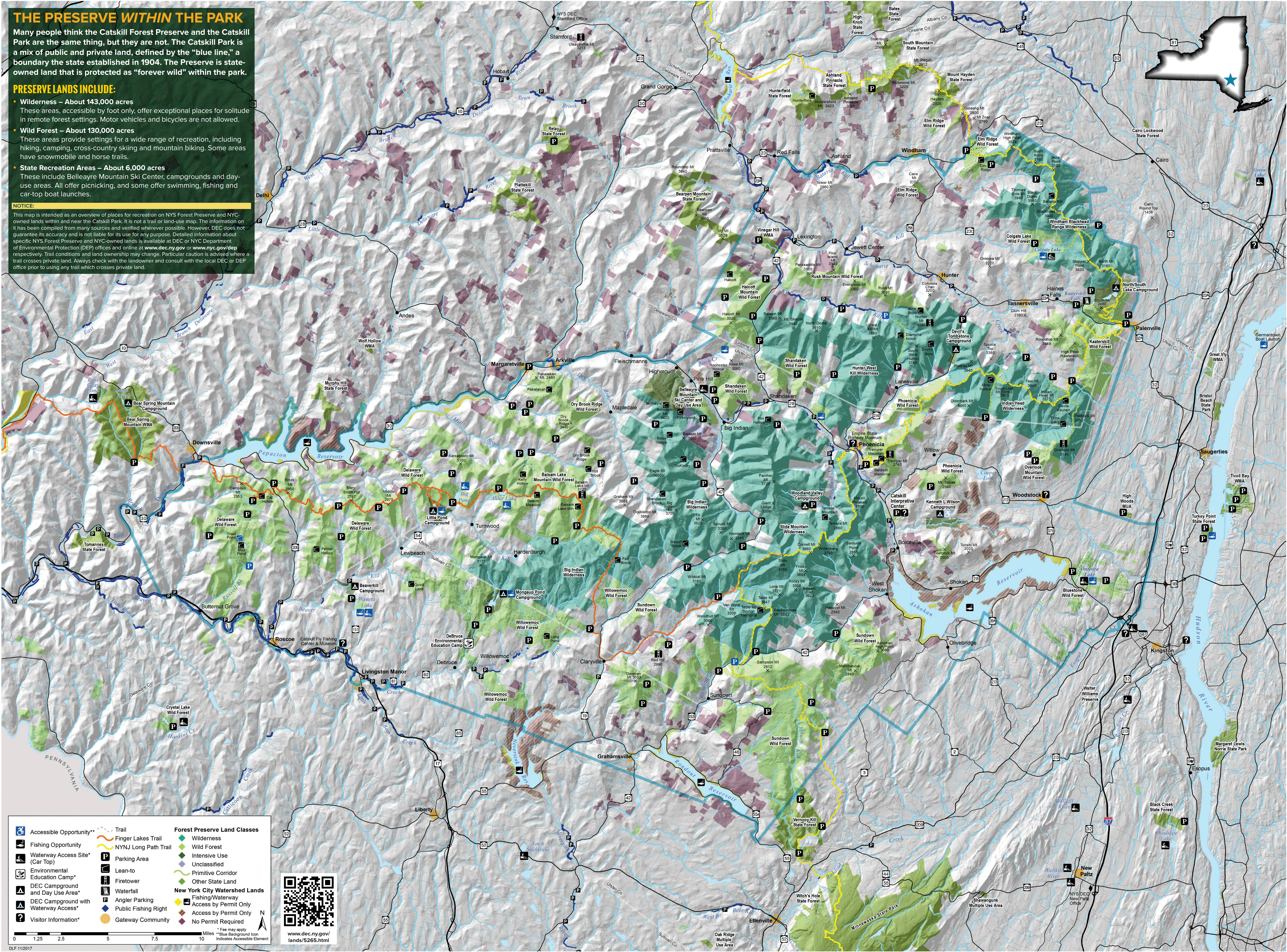
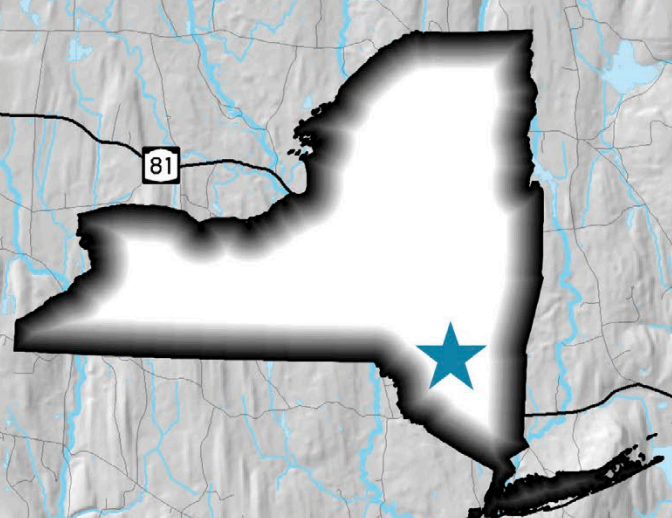
THE PRESERVE WITHIN THE PARK

Many people think the Catskill Forest Preserve and the Catskill Park are the same thing, but they are not. The Catskill Park is a mix of public and private land, defined by the "blue line," a boundary the state established in 1904. The Preserve is state-owned land that is protected as "forever wild" within the park.

PRESERVE LANDS INCLUDE:

- Wilderness – About 143,000 acres**
These areas, accessible by foot only, offer exceptional places for solitude in remote forest settings. Motor vehicles and bicycles are not allowed.
- Wild Forest – About 130,000 acres**
These areas provide settings for a wide range of recreation, including hiking, camping, cross-country skiing and mountain biking. Some areas have snowmobile and horse trails.
- State Recreation Areas – About 6,000 acres**
These include Belleayre Mountain Ski Center, campgrounds and day-use areas. All offer picnicking, and some offer swimming, fishing and car-top boat launches.

NOTICE:
This map is intended as an overview of places for recreation on NYS Forest Preserve and NYC-owned lands within and near the Catskill Park. It is not a trail or land-use map. The information on it has been compiled from many sources and verified wherever possible. However, DEC does not guarantee its accuracy and is not liable for its use for any purpose. Detailed information about specific NYS Forest Preserve and NYC-owned lands is available at DEC or NYC Department of Environmental Protection (DEP) offices and online at www.dec.ny.gov or www.nyc.gov/dep respectively. Trail conditions and land ownership may change. Particular caution is advised where a trail crosses private land. Always check with the landowner and consult with the local DEC or DEP office prior to using any trail which crosses private land.



	Accessible Opportunity**		Trail		Wilderness
	Fishing Opportunity		Finger Lakes Trail		Wild Forest
	Waterway Access Site* (Car Top)		NYNJ Long Path Trail		Intensive Use
	Environmental Education Camp*		Parking Area		Unclassified
	DEC Campground and Day Use Area*		Lean-to		Primitive Corridor
	DEC Campground with Waterway Access*		Firetower		Other State Land
	Visitor Information*		Waterfall	New York City Watershed Lands	
			Angler Parking		Fishing/Waterway Access by Permit Only
			Public Fishing Right		Access by Permit Only
			Gateway Community		No Permit Required

* Fee may apply
** Blue Background Icon Indicates Accessible Element

www.dec.ny.gov/lands/5265.html