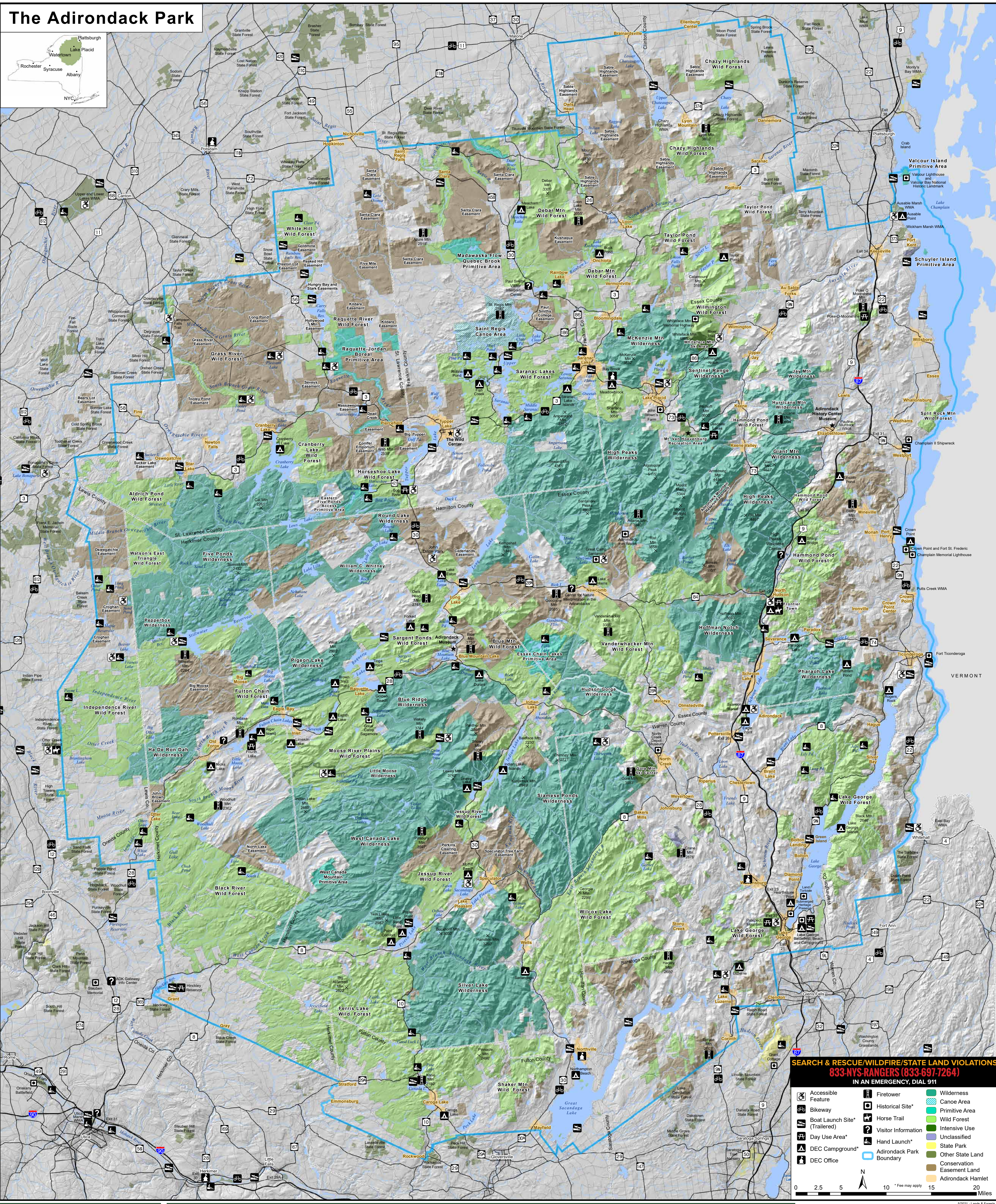


# The Adirondack Park



**NEW YORK STATE DEPARTMENT OF ENVIRONMENTAL CONSERVATION (DEC)**  
 DEC is responsible for managing the Forest Preserve and overseeing conservation easement lands, which includes providing for public recreation.

**ADIRONDACK PARK AGENCY (APA)**  
 The APA guides the management of Forest Preserve lands and the development of private lands within the Adirondack Park. The agency seeks to maintain the unique character of the Park while promoting appropriate public use and economic development.

**FOREST PRESERVE CLASSIFICATIONS**  
 The Adirondack Park State Land Master Plan categorizes the Forest Preserve lands into several classifications and provides guidelines for how DEC manages land in each of the classifications. Most of the Forest Preserve is classified as either:

- WILDERNESS (1.2 MILLION ACRES)**  
 Wilderness lands offer visitors exceptional opportunities for solitude in remote forest settings. Bicycles, motorboats, snowmobiles, and other motorized vehicles or devices are prohibited.
- WILD FOREST (1.3 MILLION ACRES)**  
 Wild forests provide for a variety of recreational activities with most waters open to motorboats, most trails open to non-motorized bikes, and limited access for motor vehicles and snowmobiles.
- INTENSIVE USE AREAS**  
 Numerous state-owned recreational use areas, such as DEC campgrounds, day use areas, ski areas and scenic highways, are scattered throughout the Adirondacks, providing additional opportunities for adventure.

**CONSERVATION EASEMENTS LANDS:**  
 Conservation easements are permanent partnerships between the State and private landowners that help maintain open spaces and biological diversity while the landowners continue to manage their properties for purposes such as timber production. Public recreational opportunities vary with each conservation easement. For information on individual easements, visit [www.dec.ny.gov](http://www.dec.ny.gov) and search Conservation Easement or contact the DEC Lands and Forests office nearest to the easement property.

**SEARCH & RESCUE/WILDFIRE/STATE LAND VIOLATIONS**  
**833-NYS-RANGERS (833-697-7264)**  
 IN AN EMERGENCY, DIAL 911

Accessible Feature	Firetower	Wilderness
Bikeway	Historical Site*	Canoe Area
Boat Launch Site* (Trailer)	Horse Trail	Primitive Area
Day Use Area*	Visitor Information	Wild Forest
DEC Campground*	Hand Launch*	Intensive Use
DEC Office	Adirondack Park Boundary	Unclassified
		State Park
		Other State Land
		Conservation Easement Land
		Adirondack Hamlet

0 2.5 5 10 15 20 Miles

**PLEASE RESPECT PRIVATE LANDS**  
 The Adirondack Park includes both public and private lands. Please do not enter private land without the landowner's permission.

**NOTICE:**  
 This map provides a general overview of recreational opportunities on Adirondack Forest Preserve and conservation easement lands. It is not a trail map or land-use map. It has been compiled from many sources and verified wherever possible. However, DEC does not guarantee its accuracy and is not liable for its use for any purpose. Details on specific units within the Forest Preserve are available at DEC offices and online at [www.dec.ny.gov](http://www.dec.ny.gov).