



Department of  
Environmental  
Conservation


New York State Department of Environmental Conservation

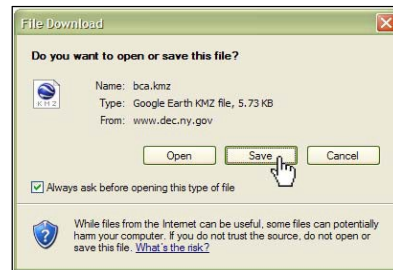
# Instructions and Tips for Viewing DEC Data in Google Earth Pro

## Table of Contents

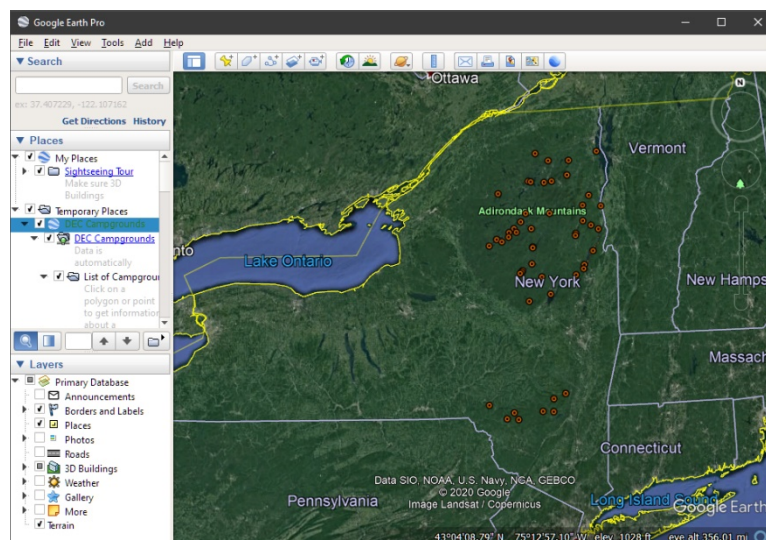
Viewing DEC's Data in Google Earth .....	1
Contains instructions for installing Google Earth and downloading DEC's data	
Using Google Earth .....	2
Contains tips for using Google Earth's basic navigation tools	
Getting More Information About Features.....	3
Contains tips for viewing detailed information about places and getting driving directions.	

## Viewing DEC's Data in Google Earth Pro:

1. Download free Google Earth Pro software from <https://www.google.com/earth/versions/> Scroll down and download Google Earth Pro on Desktop
2. Go to DEC's Google Earth Data webpage at: <http://www.dec.ny.gov/pubs/42978.html>
3. Download a data set by clicking on the Google Earth icon  next to the data set's name.
4. You will be given the option to save or open the file. It is recommended that you save the file for easier access later. Select "Save" and choose a location to save the file in. Select "Open" if you want to open Google Earth to view the data without saving it to your computer.



5. Double-click the saved file to open it in Google Earth. Alternately, open Google Earth and go to "File" then "Open...". Select the file you've downloaded and saved, and then click "Open".
6. The DEC data set will be displayed in Google Earth.

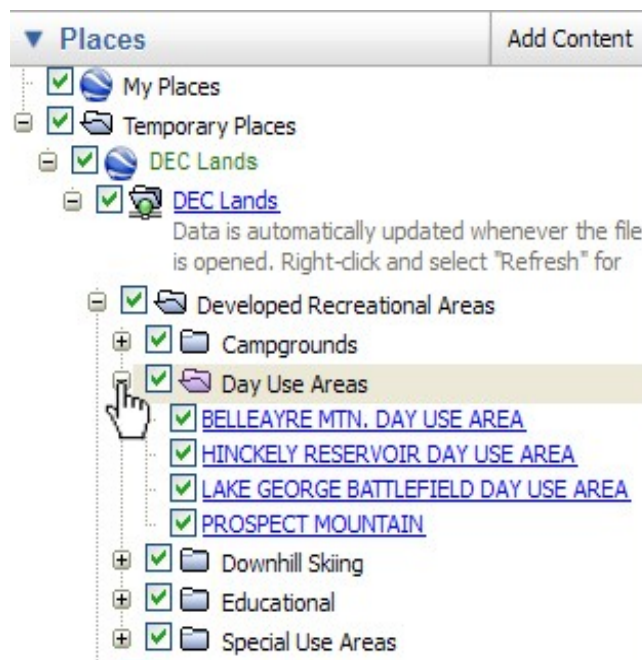


## Using Google Earth:

1. The “Places” section on the left contains the list of features.



2. Some data sets have multiple folders to help organize the information. Use the “+/-” button next to a folder to open or close it.



3. Double-click on a feature name in the “Places” menu to zoom-to that feature on the map.
4. Use the tools in the upper right to move around the map, zoom in or

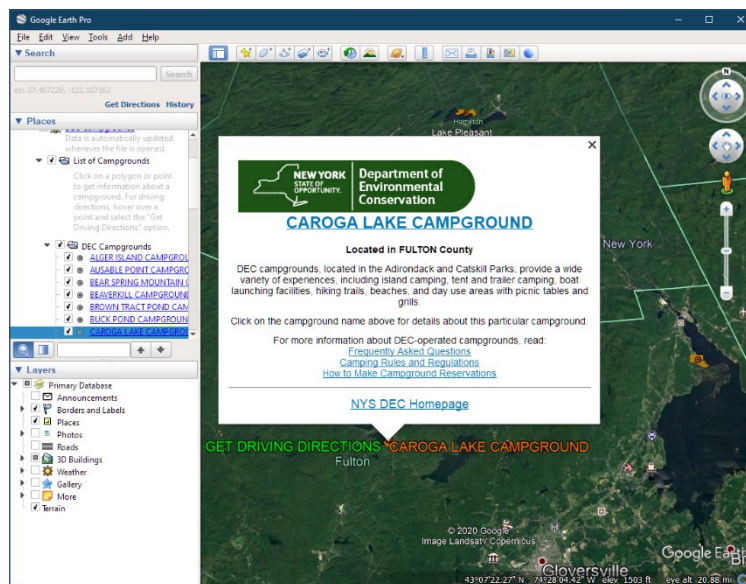


out, and tilt the map.

5. You can zoom-in and tilt the map to get a better view of the landscape.

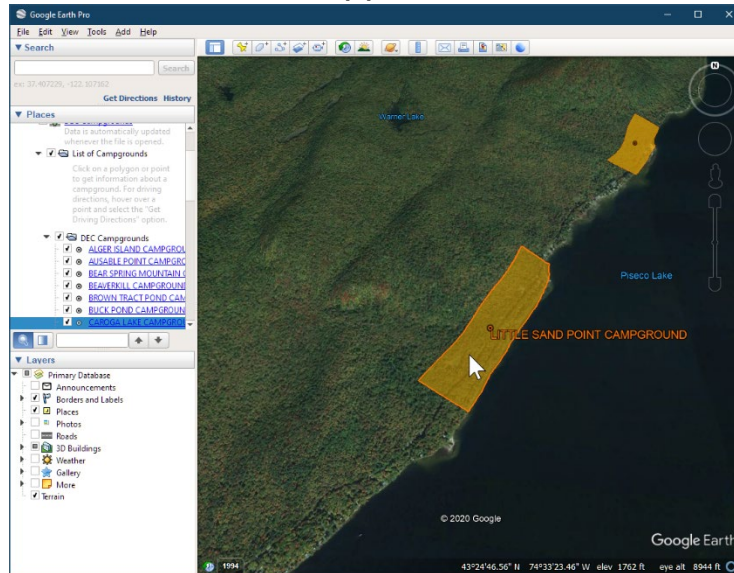
### Getting More Information About Features:

1. Click once on a feature name in the “Places” menu to open a balloon containing information about that point. You can also see the information balloon by clicking once on a point, line, or polygon on the map.



2. Some information balloons contain data tables or pictures.

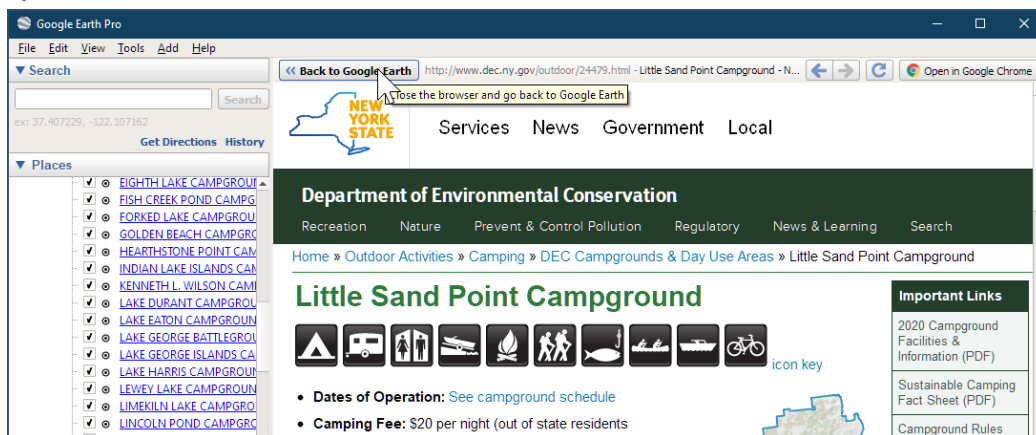
- If a feature is not labeled, move the mouse pointer over the point, line, or polygon and its name will appear.



- Click on the links (blue text) inside the information balloons to get even more information from DEC's website.

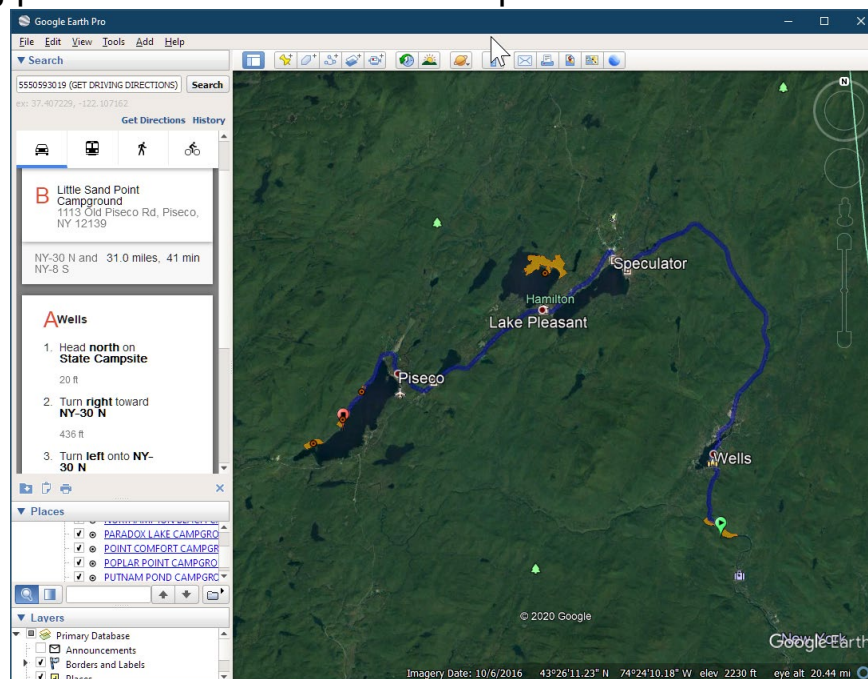


- The website will automatically open in Google Earth's Browser. To return to the map, click on the "Back to Google Earth" button in the top left corner.





6. If you want the links to open in a new browser window, click on “Tools” and then “Options”. Click on the “General” tab, select the option that says, “Show web results in external browser”, and then click “OK”.
7. If you’ve found a place you’d like to visit, Google Earth can give you driving directions. Click on the “To here” link at the bottom of the information balloon. Then, enter your starting address in the “From” field on the “Directions” tab in the top left corner of Google Earth.
8. Step-by-step directions are shown in the left-hand column and your driving path will be shown on the map.



(Note: Driving Directions are only available for features represented as points.)

For more tips on using Google Earth, view the User Guide at:

[https://support.google.com/earth/?page=guide\\_toc.cs#topic=7364880](https://support.google.com/earth/?page=guide_toc.cs#topic=7364880)

Explore all of DEC’s Google Earth Data files to discover a wealth of information on recreational opportunities and environmental resources across New York State!

-----  
DEC’s Google Maps and Earth Page: <http://www.dec.ny.gov/pubs/42978.html>

DEC’s Mapping Gateway: <http://www.dec.ny.gov/pubs/212.html>